

DATA EXCHANGE AND THE OPIOID CRISIS

WEDI

December 3, 2019

William A Hazel Jr. M.D.

Senior Advisor for Innovation and Community Engagement

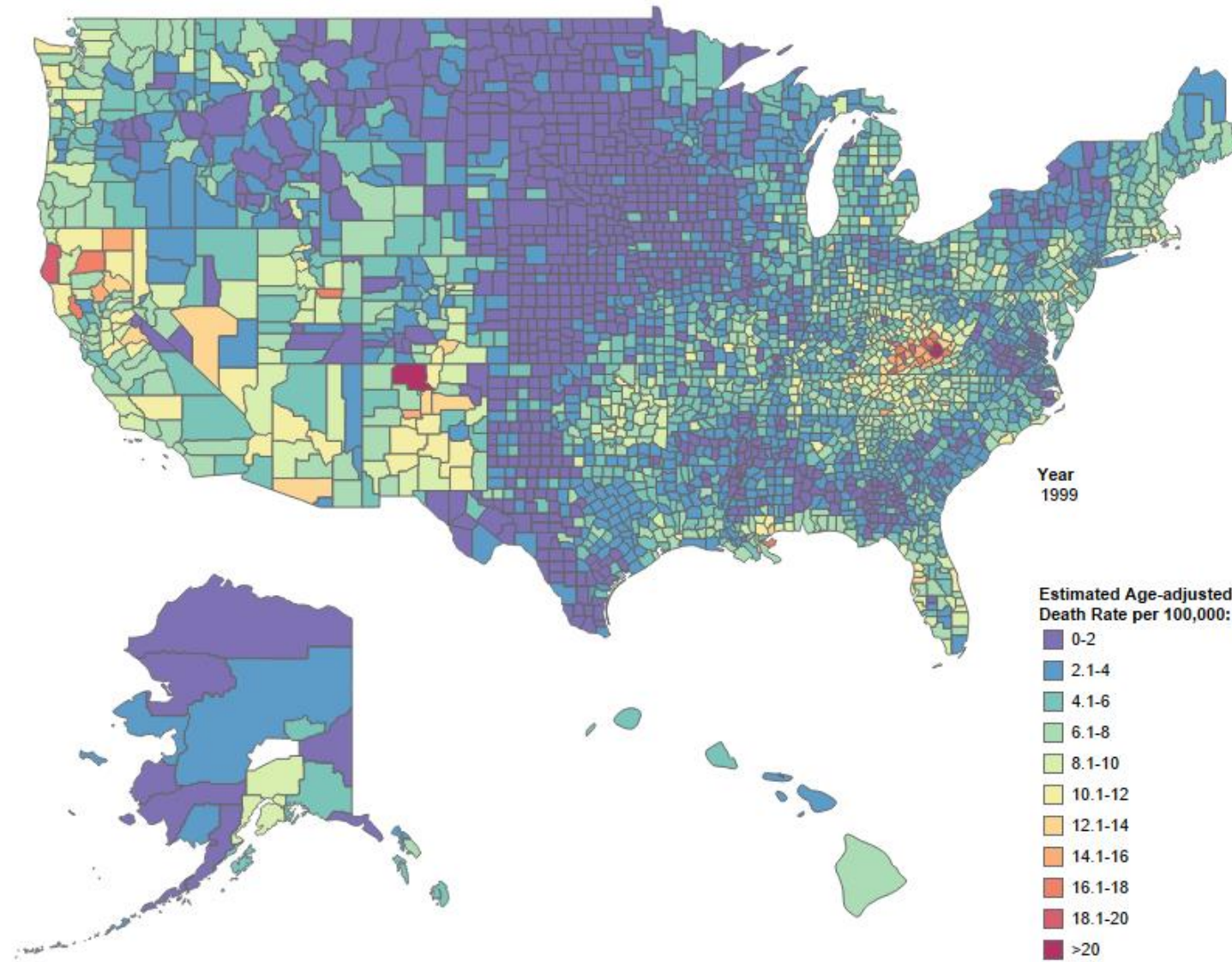
Distinguished Visiting Professor of Public Policy

Schar School of Policy and Government

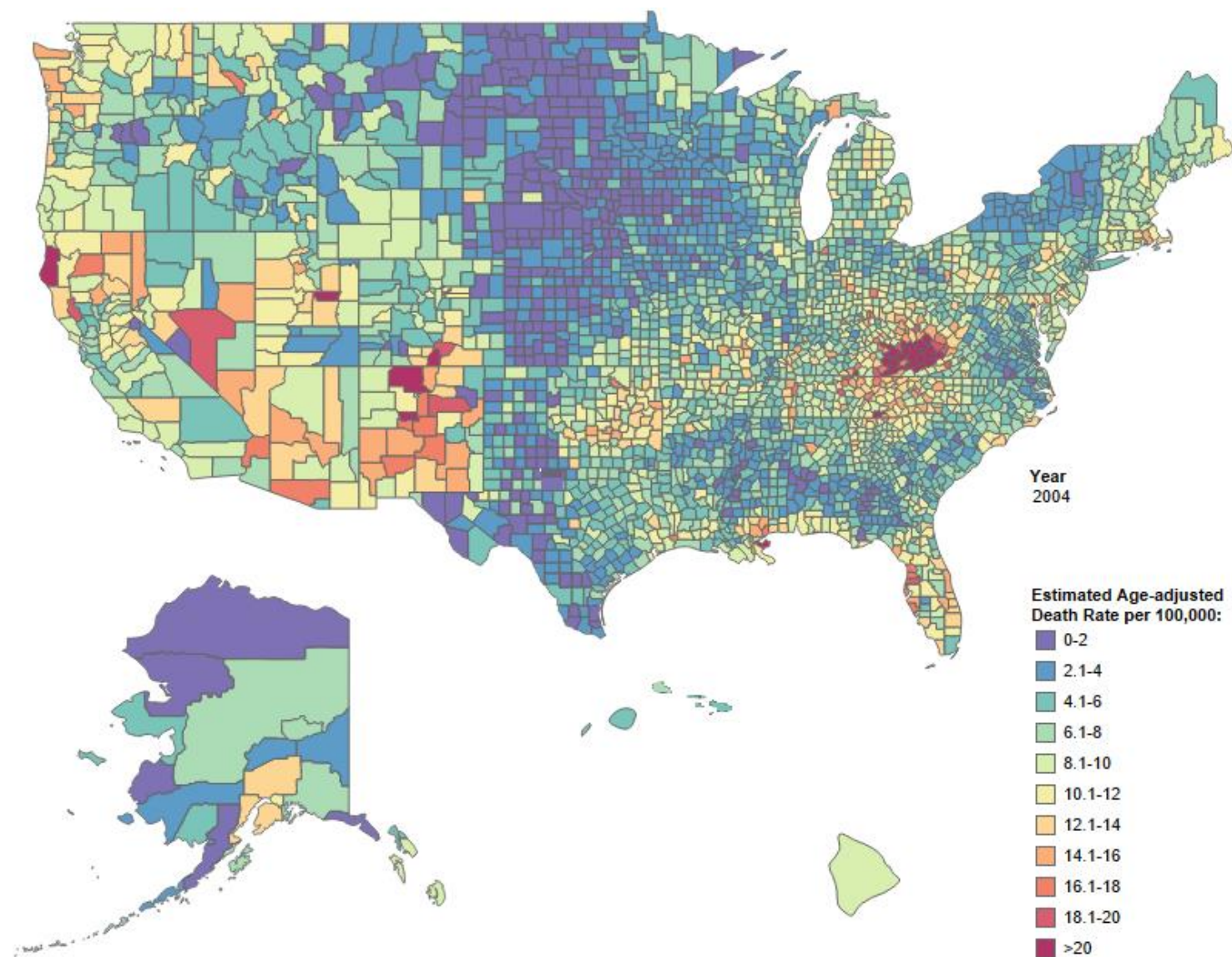
George Mason University

whazel@gmu.edu

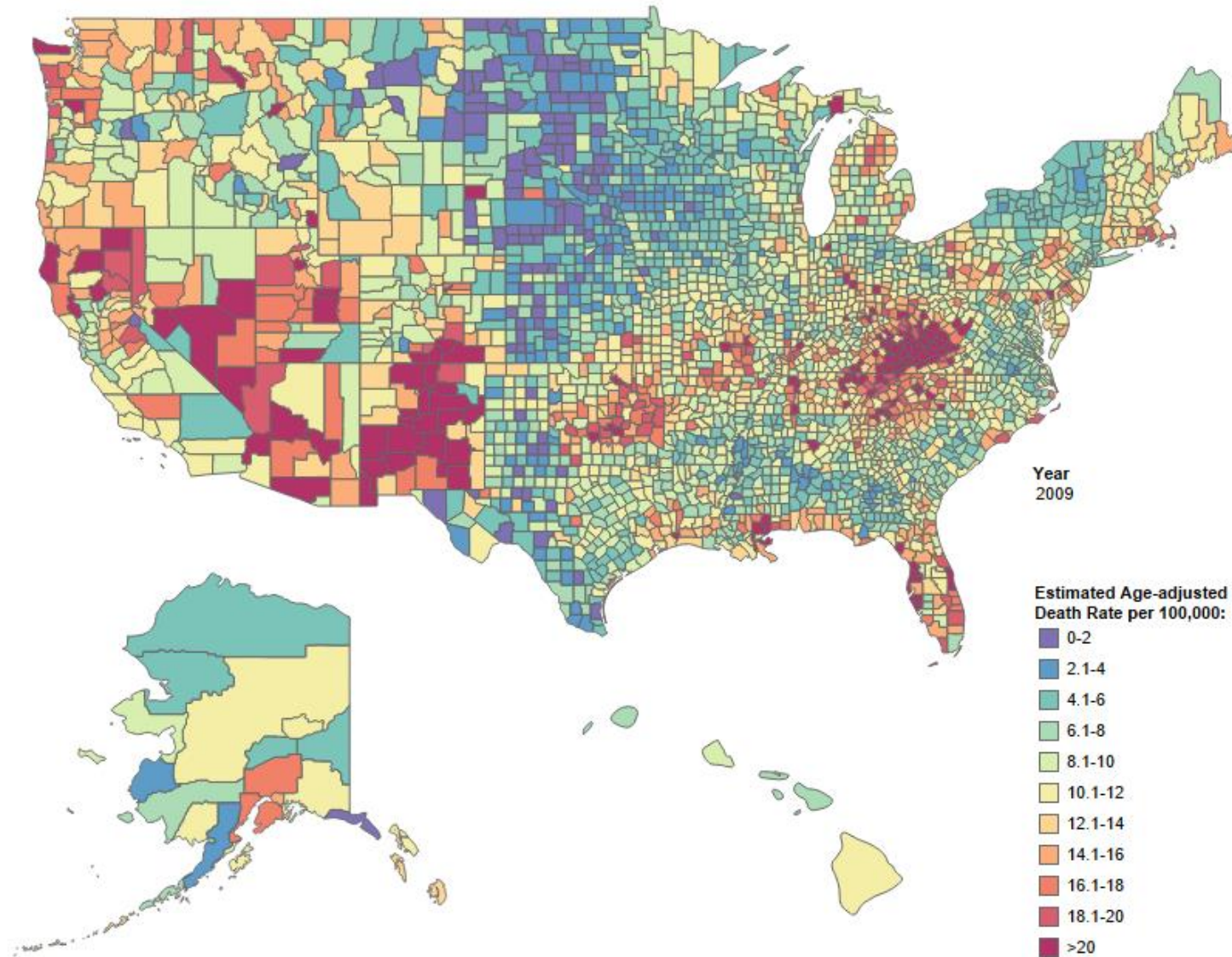




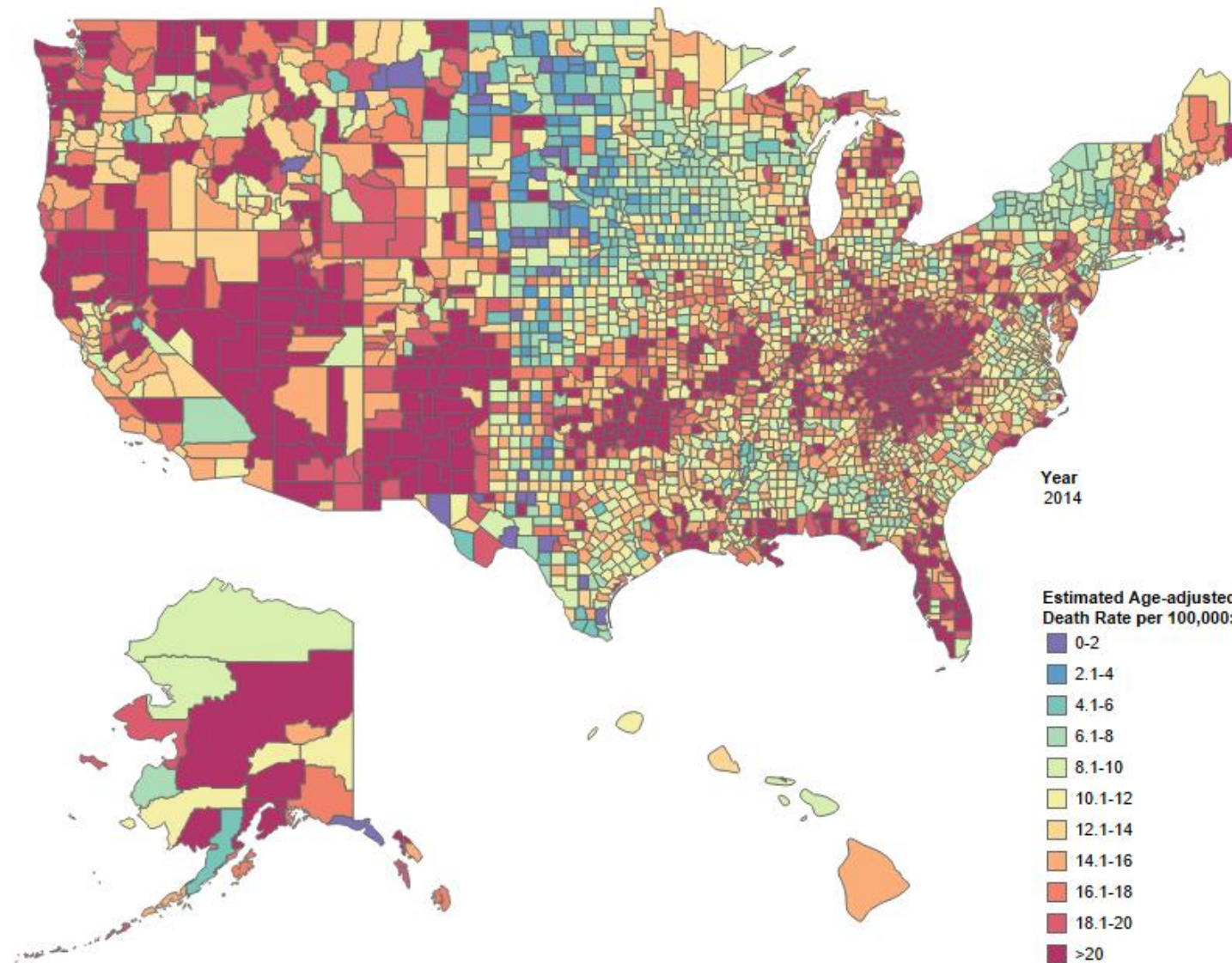
Designed by L. Rossen, B. Bastian & Y. Chong. SOURCE: CDC/NCHS, National Vital Statistics System.



Designed by L. Rossen, B. Bastian & Y. Chong. SOURCE: CDC/NCHS, National Vital Statistics System.



Designed by L. Rossen, B. Bastian & Y. Chong. SOURCE: CDC/NCHS, National Vital Statistics System.

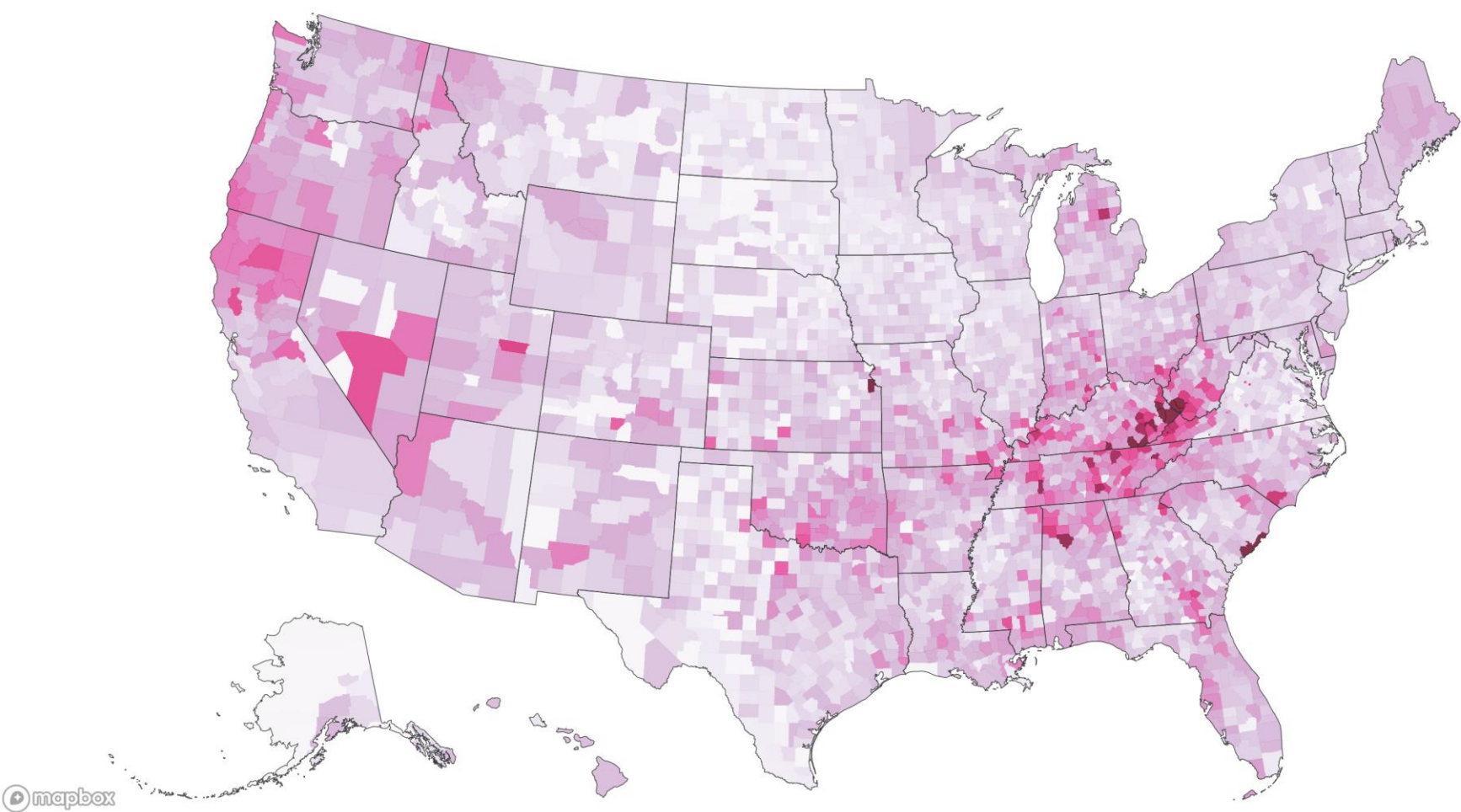


Designed by L. Rossen, B. Bastian & Y. Chong. SOURCE: CDC/NCHS, National Vital Statistics System.

DRUG ENFORCEMENT AGENCY ARCOS DATABASE

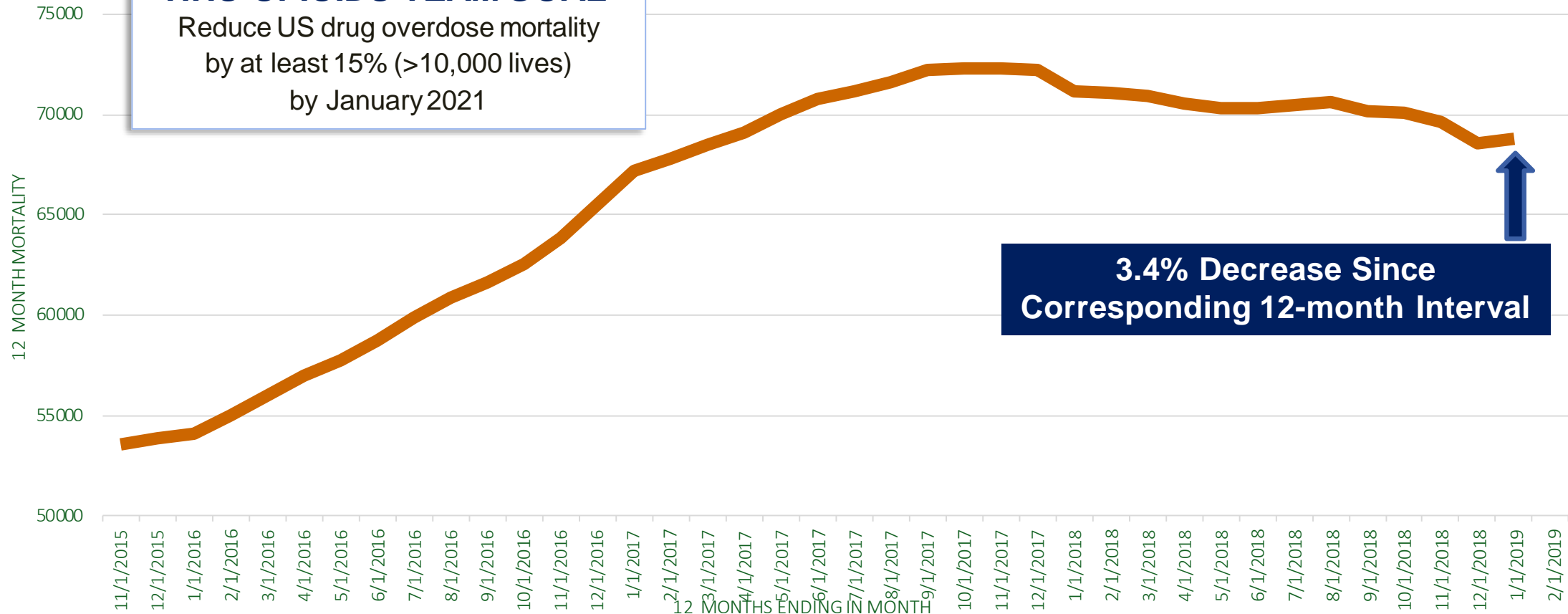
Number of pills distributed per person, per year

Average yearly total, by county, 2006 through 2012



HHS OPIOIDS TEAM GOAL

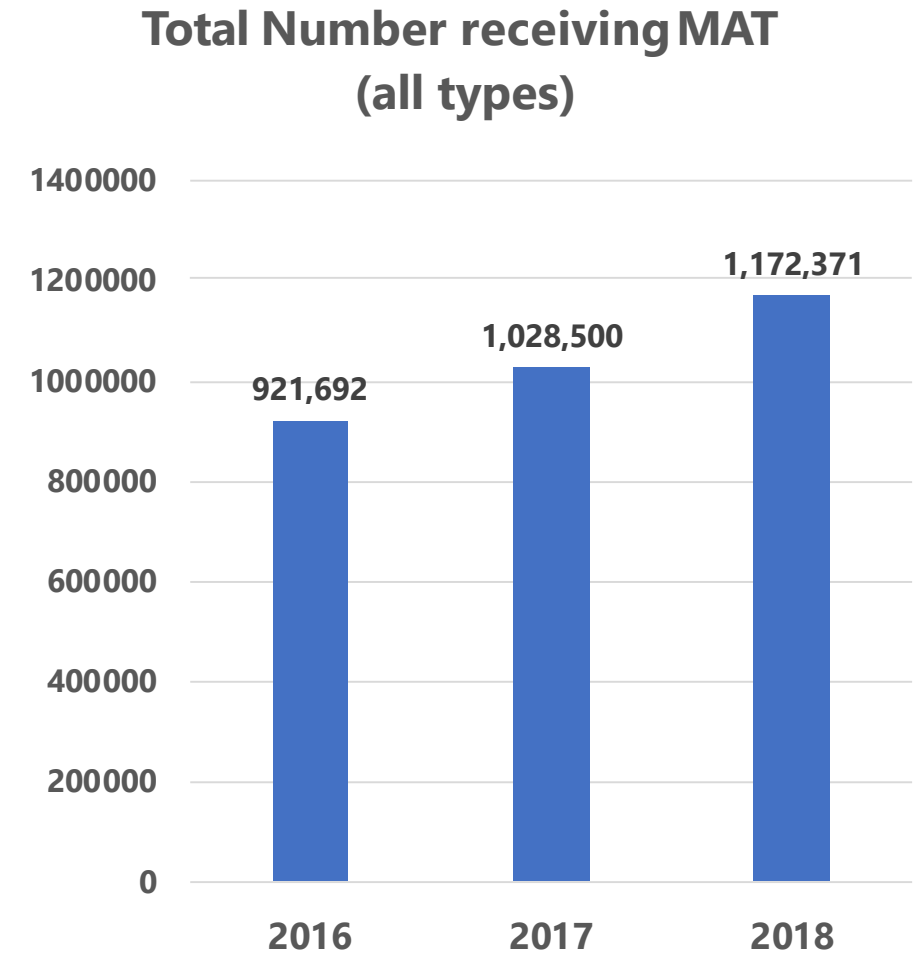
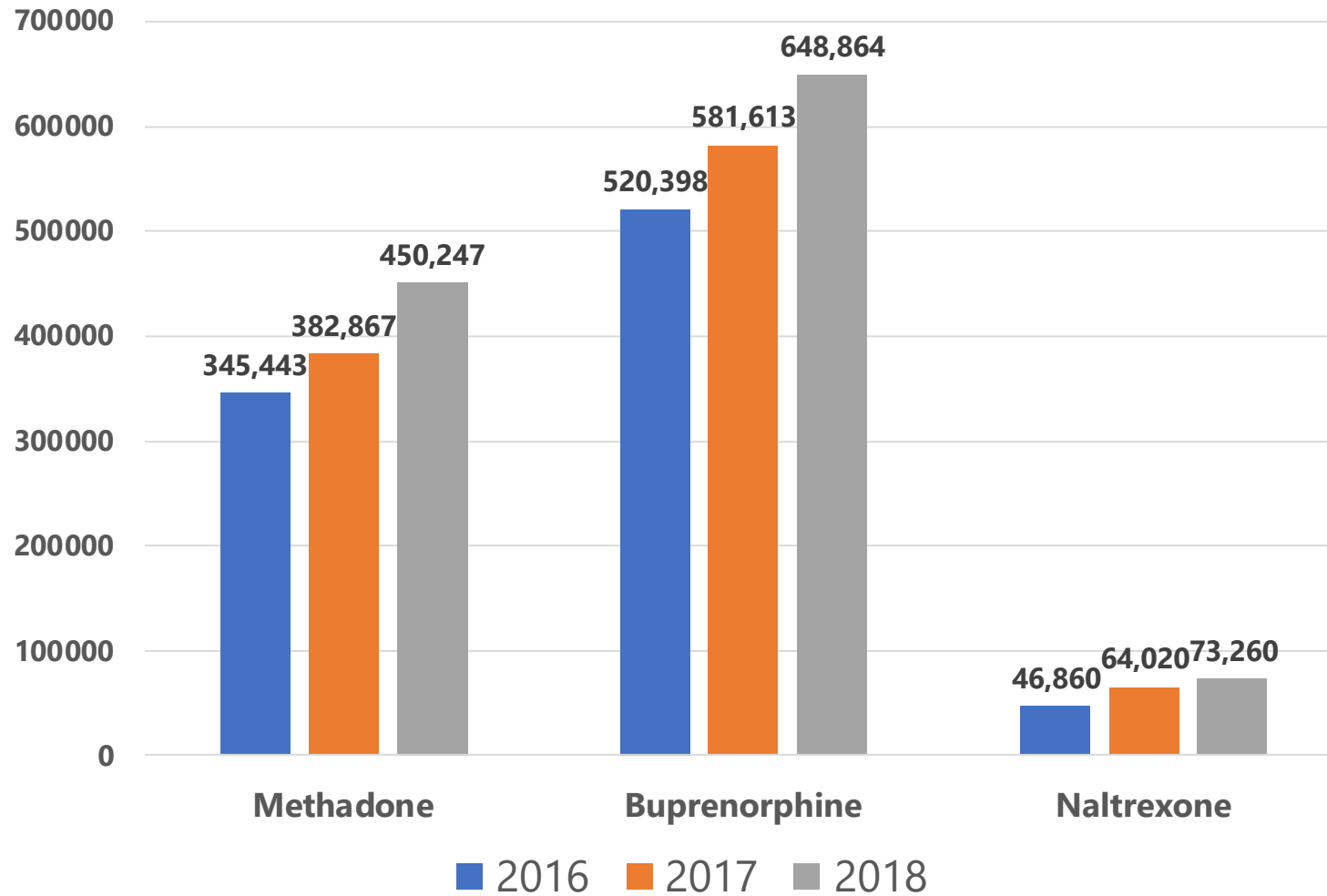
Reduce US drug overdose mortality
by at least 15% (>10,000 lives)
by January 2021



OFFICE OF THE
ASSISTANT SECRETARY FOR PLANNING AND EVALUATION

Source: CDC National Vital Statistics System,
reported August 2019

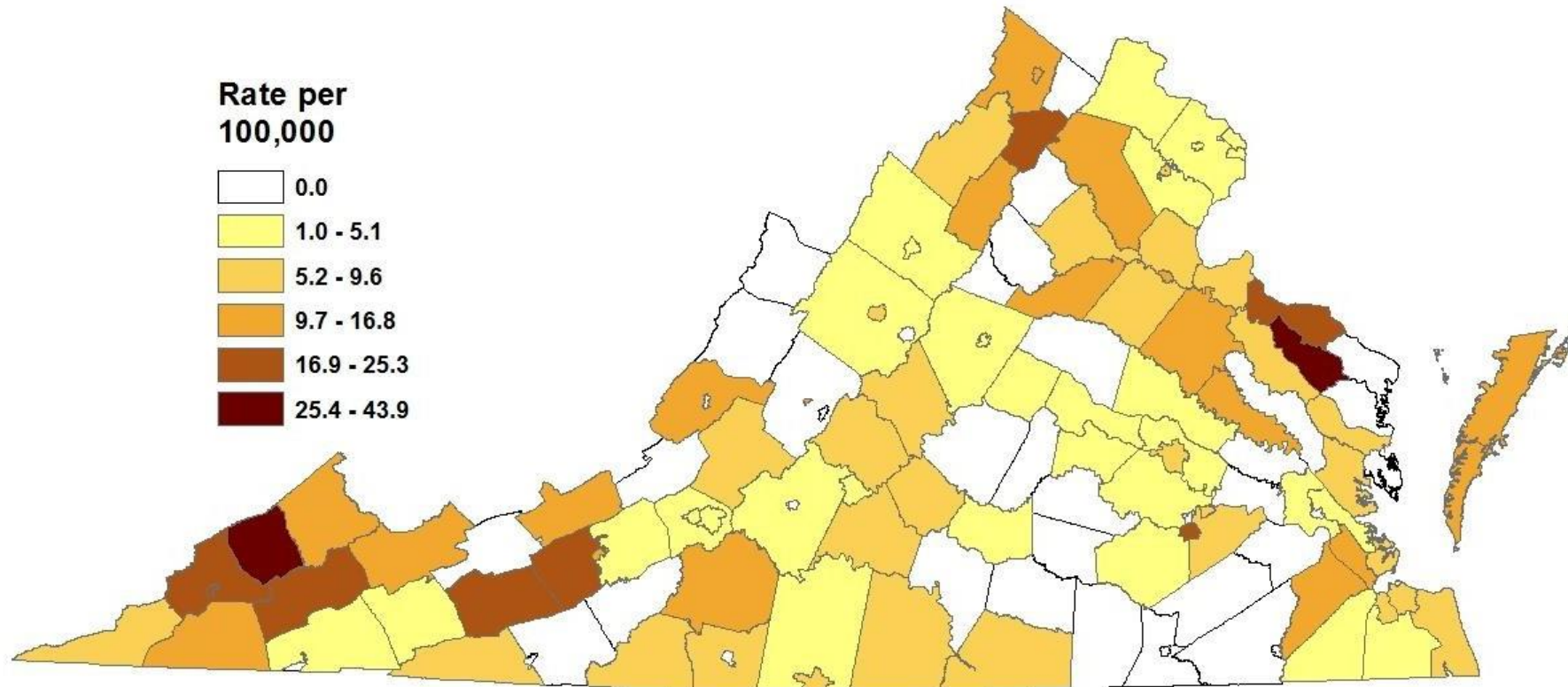
GEORGE MASON UNIVERSITY



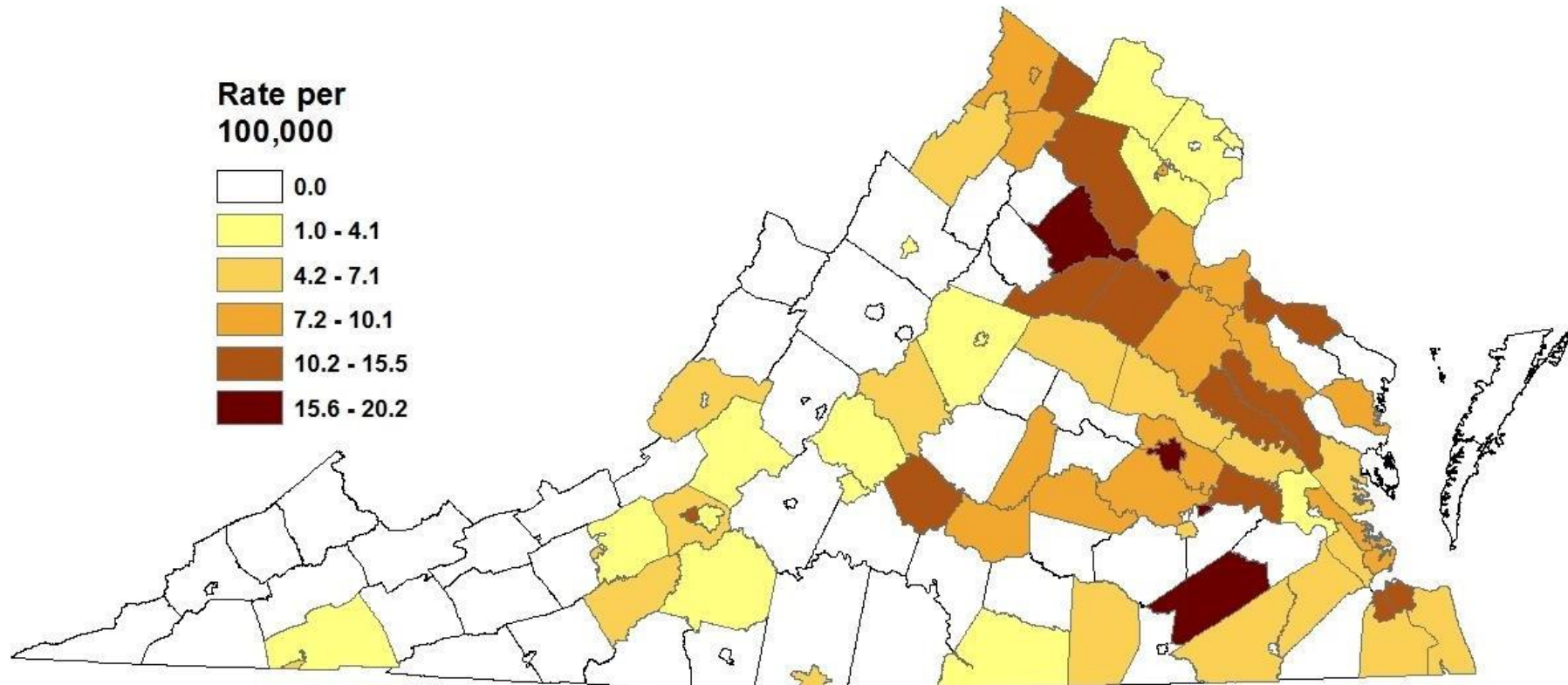
OFFICE OF THE
ASSISTANT SECRETARY FOR PLANNING AND EVALUATION

Source: 2018 NSDUH
GEORGE MASON UNIVERSITY

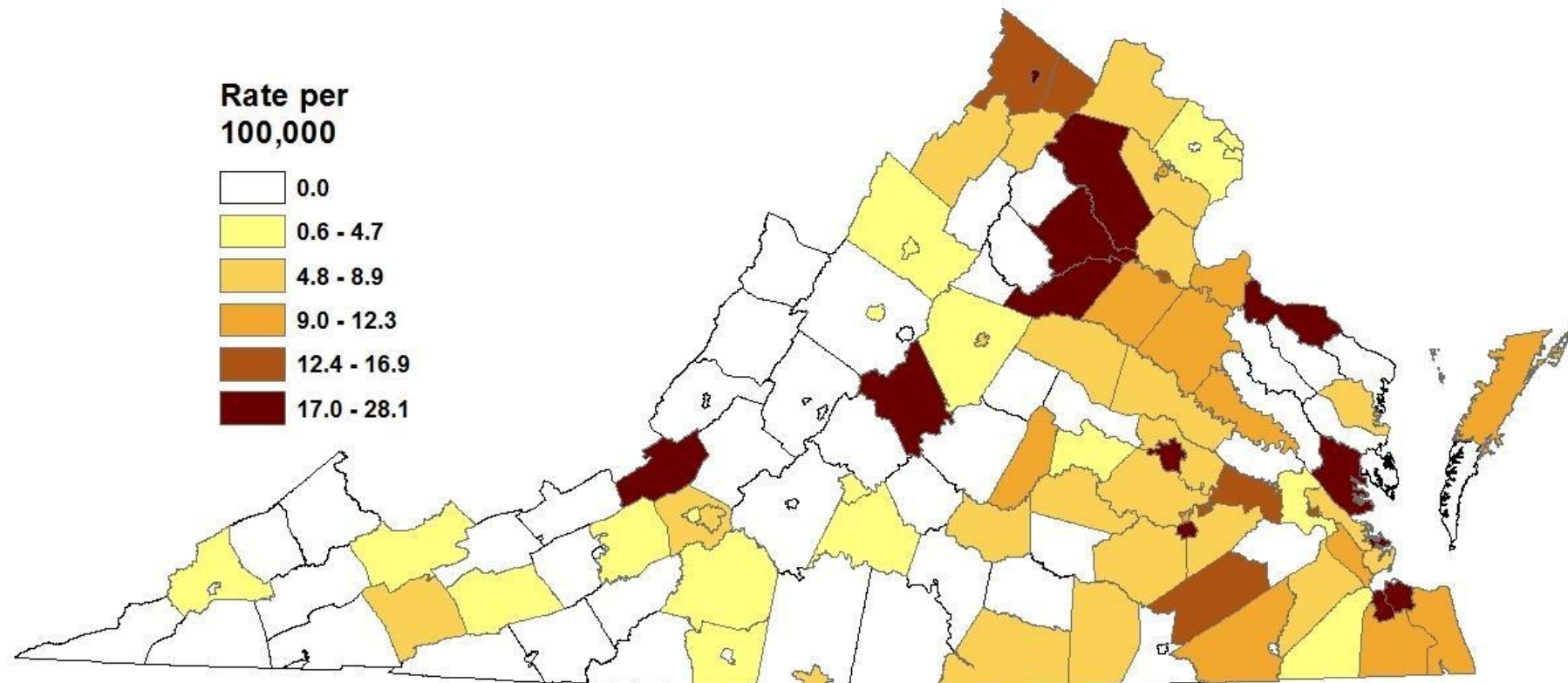
Rate of Fatal Prescription Opioid (Excluding Fentanyl) Overdoses by Locality of Overdose, 2016



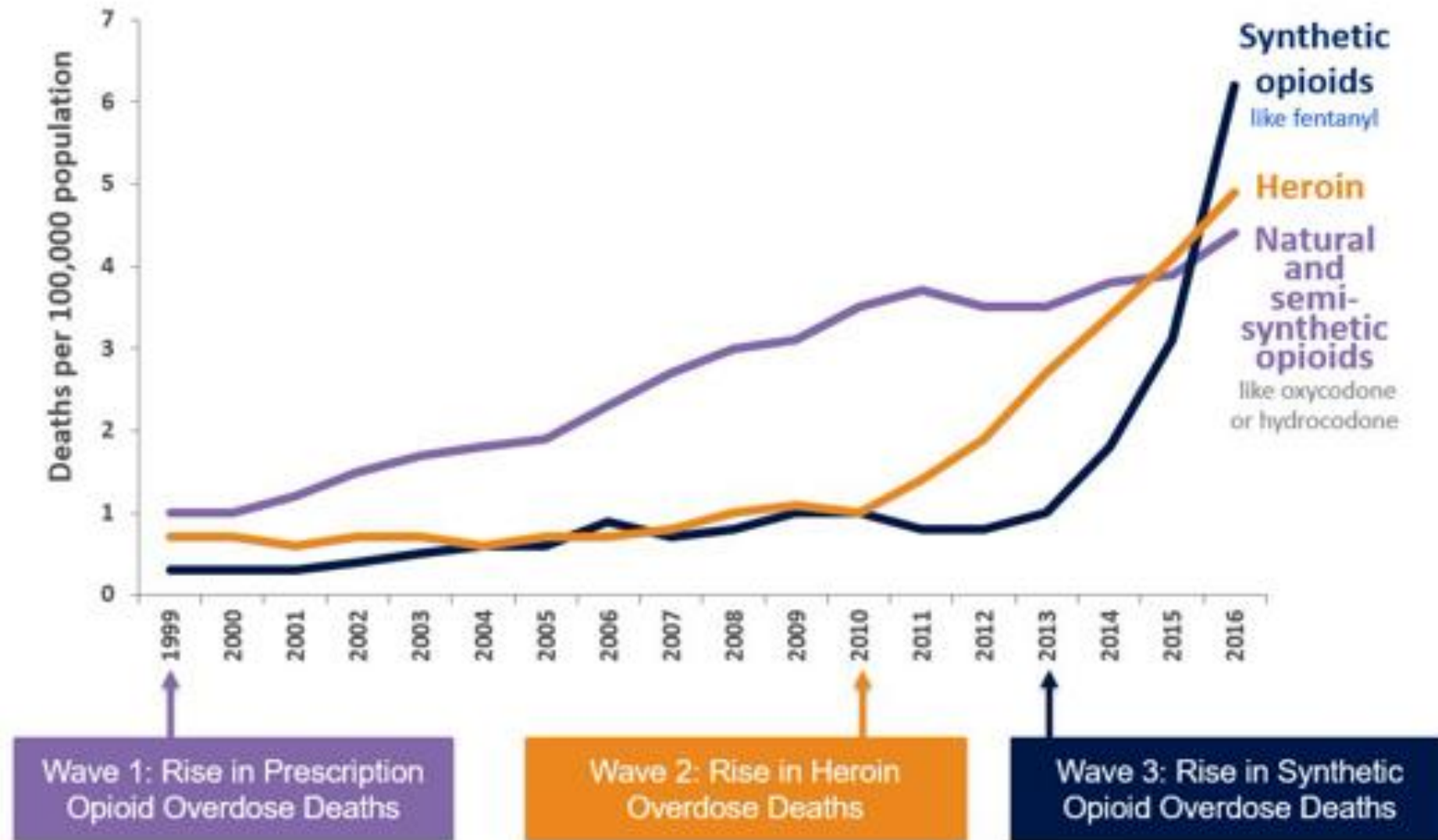
Rate of Fatal Heroin Overdoses by Locality of Overdose, 2016



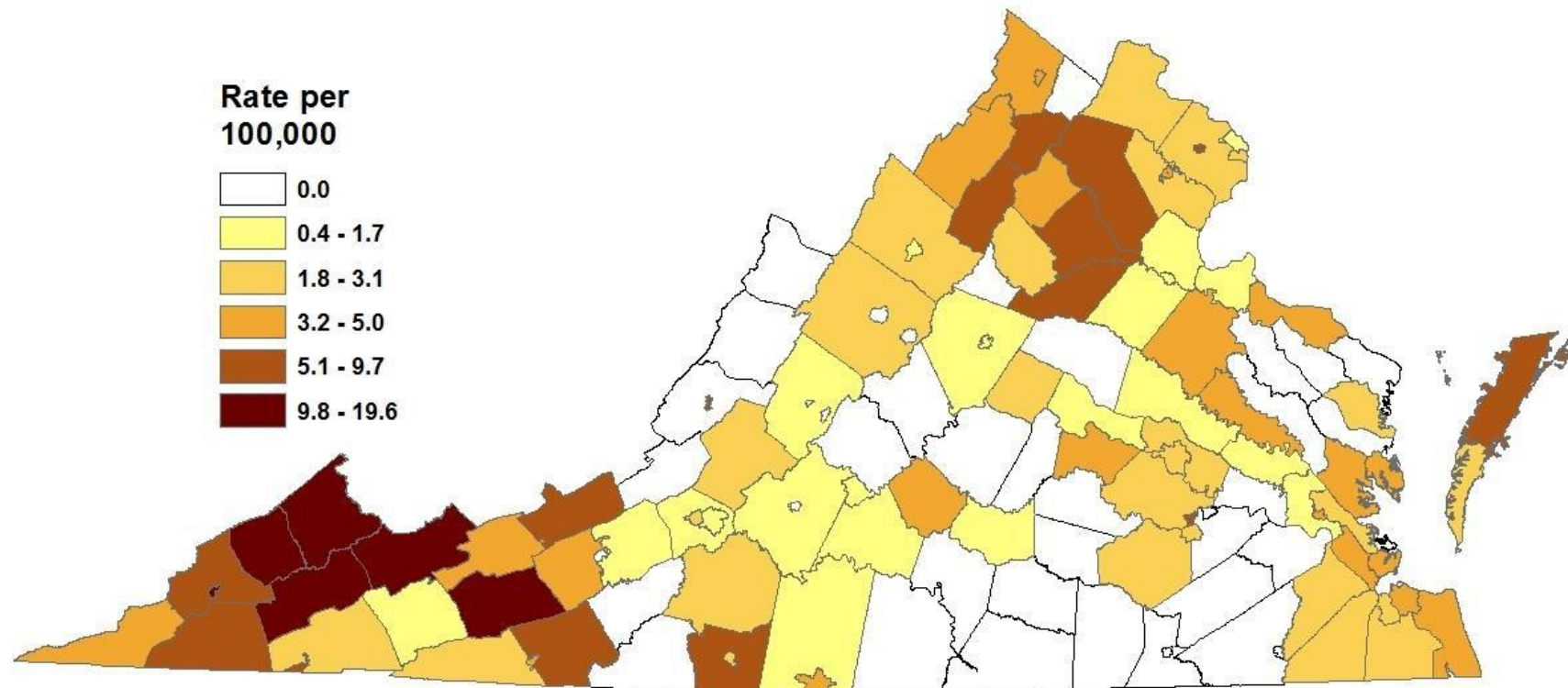
Rate of Fatal Fentanyl (Rx, Illicit, and Analog) Overdoses by Locality of Overdose, 2016



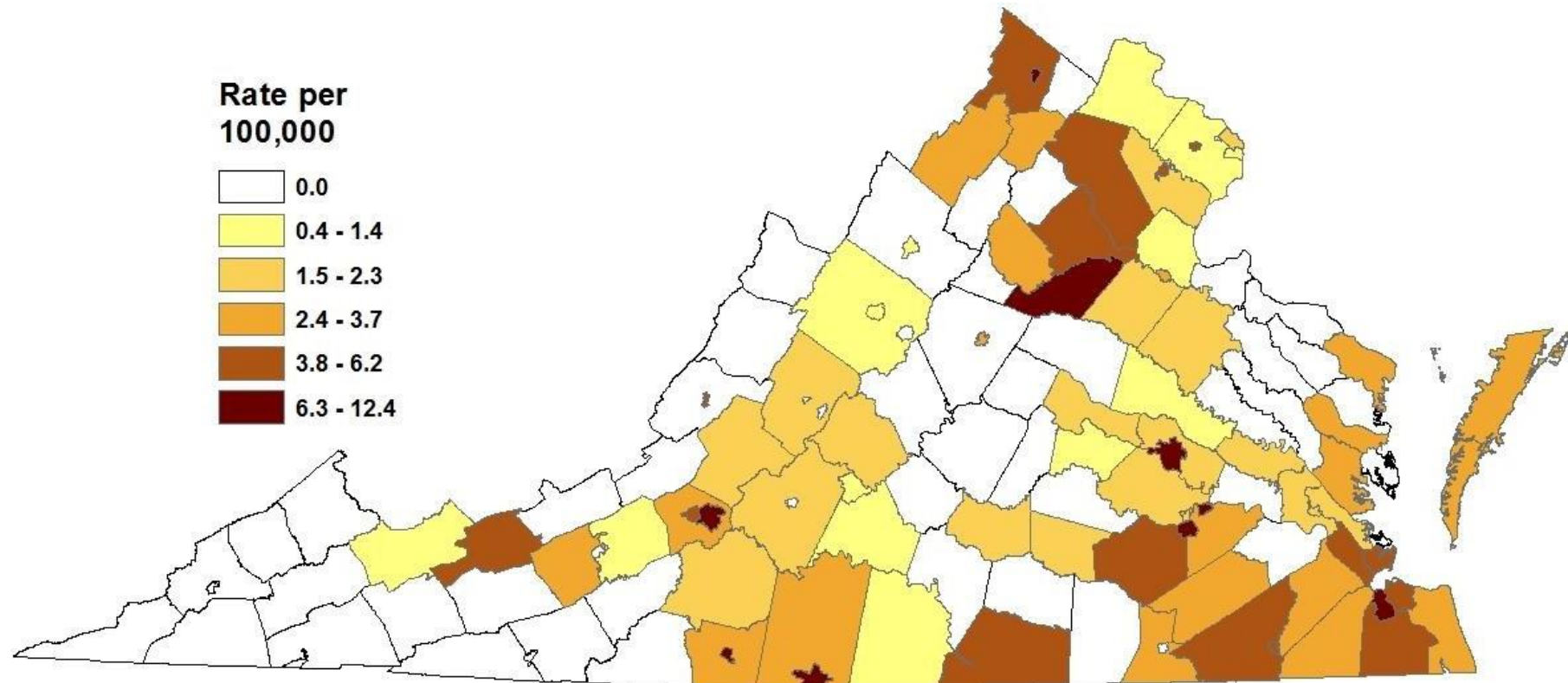
3 Waves of the Rise in Opioid Overdose Deaths



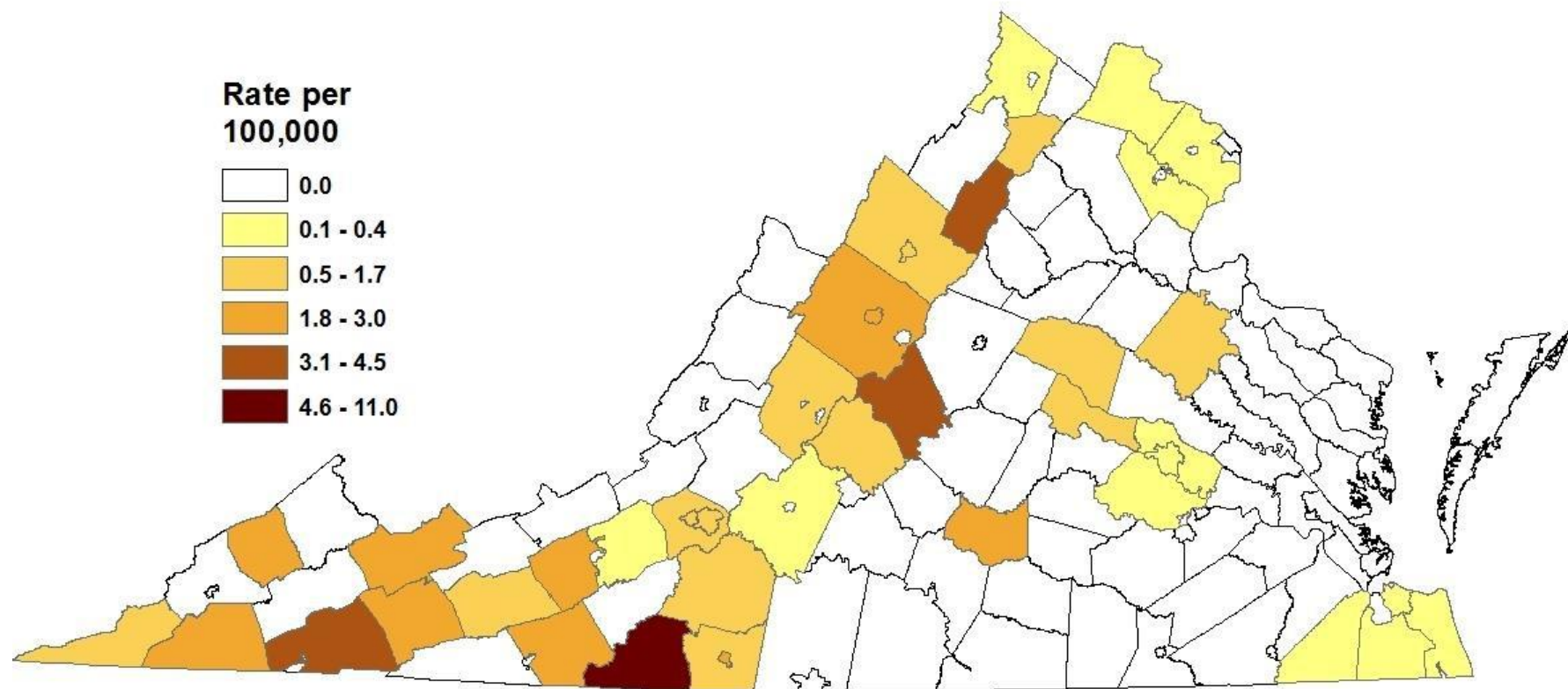
Rate of Fatal Benzodiazepine Overdoses by Locality of Overdose, 2014 - 2016



Rate of Fatal Cocaine Overdoses by Locality of Overdose, 2014 - 2016



Rate of Fatal Methamphetamine Overdoses by Locality of Overdose, 2014 - 2016





S.T.A.R.T. SYSTEM OF CARE

THE GATEWAY TO CARE HAS MULTIPLE POINTS OF ENTRY



HOSPITALS
EMERGENCY MEDICAL SERVICES
URGENT CARE
POLICE OFFICERS
DEPARTMENT OF CORRECTION
RECOVERY PROGRAM
FAMILY
DOCTOR
SELF



PEER SUPPORT IS THERE 24/7,
FROM THE BEGINNING



LEVEL OF CARE ASSESSMENT
AND PERSONALIZED TREATMENT
REFERRAL HAPPENS INSTANTLY



TREATMENT CAN
TAKE MANY FORMS

- Acute Care
- Subacute Care
- Ongoing Chronic Care



FIND
A JOB



SOCIAL SERVICES GET FEET
ON THE GROUND AGAIN

GOAL SETTING • HOUSING • TRANSPORTATION • EMPLOYMENT • ACTIVITIES FOR DAILY LIVING

POST-TREATMENT SCREENING LEADS
TO COMMUNITY SERVICES REFERRAL



REENTRY TO MAINSTREAM
LIVING, WITH ONGOING CARE

RESULTING IN THE
BEST LIFE POSSIBLE



REFERRAL POINTS-OF-ENTRY GATEWAY AND PEER SUPPORT



HOSPITALS
EMERGENCY MEDICAL SERVICES
URGENT CARE
POLICE OFFICERS
DEPARTMENT OF CORRECTION
RECOVERY PROGRAM
FAMILY
DOCTOR
SELF



OUR PREMISE: LLWWP

LLWWP: Health is a complex equation based on a number of inputs not limited to the clinic setting. Health takes place:

- Where people **L**ive
- Where people **L**earn
- Where people **W**ork
- Where people **W**orship
- Where people **P**lay



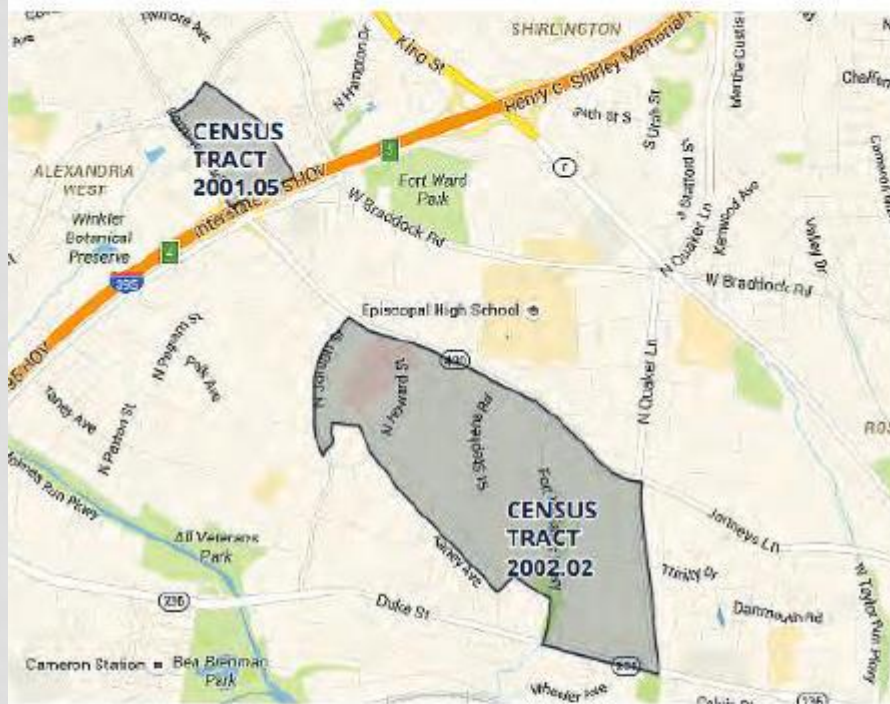
Short Distances to Large Gaps in Health

Follow the discussion

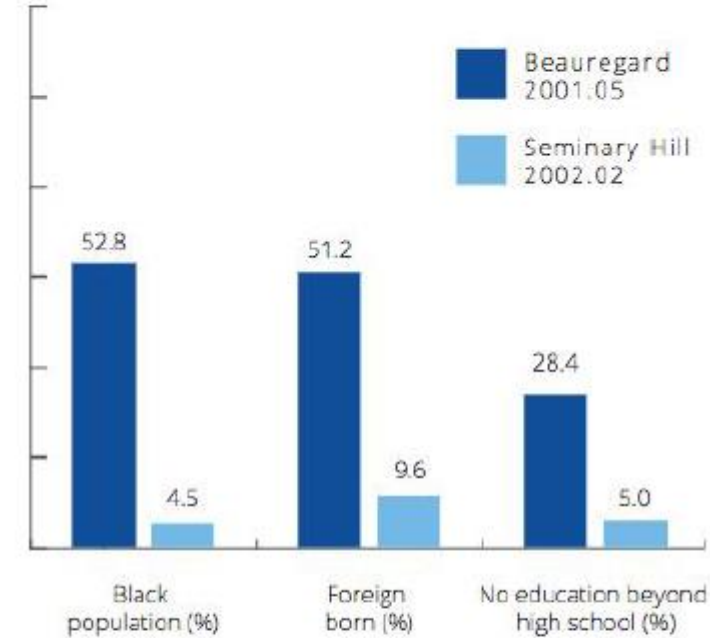
#CloseHealthGaps



Seminary Hill vs. Beauregard, Alexandria



DEMOGRAPHIC CHARACTERISTICS



LIFE EXPECTANCY



Beauregard 2001.05 **79**

Seminary Hill 2002.02 **84**

MEDIAN HOUSEHOLD INCOME

\$186K

— Seminary Hill
\$186,705

\$44K

— Beauregard
\$44,624



Sharad Rao
CEO
Tetrus Corp.

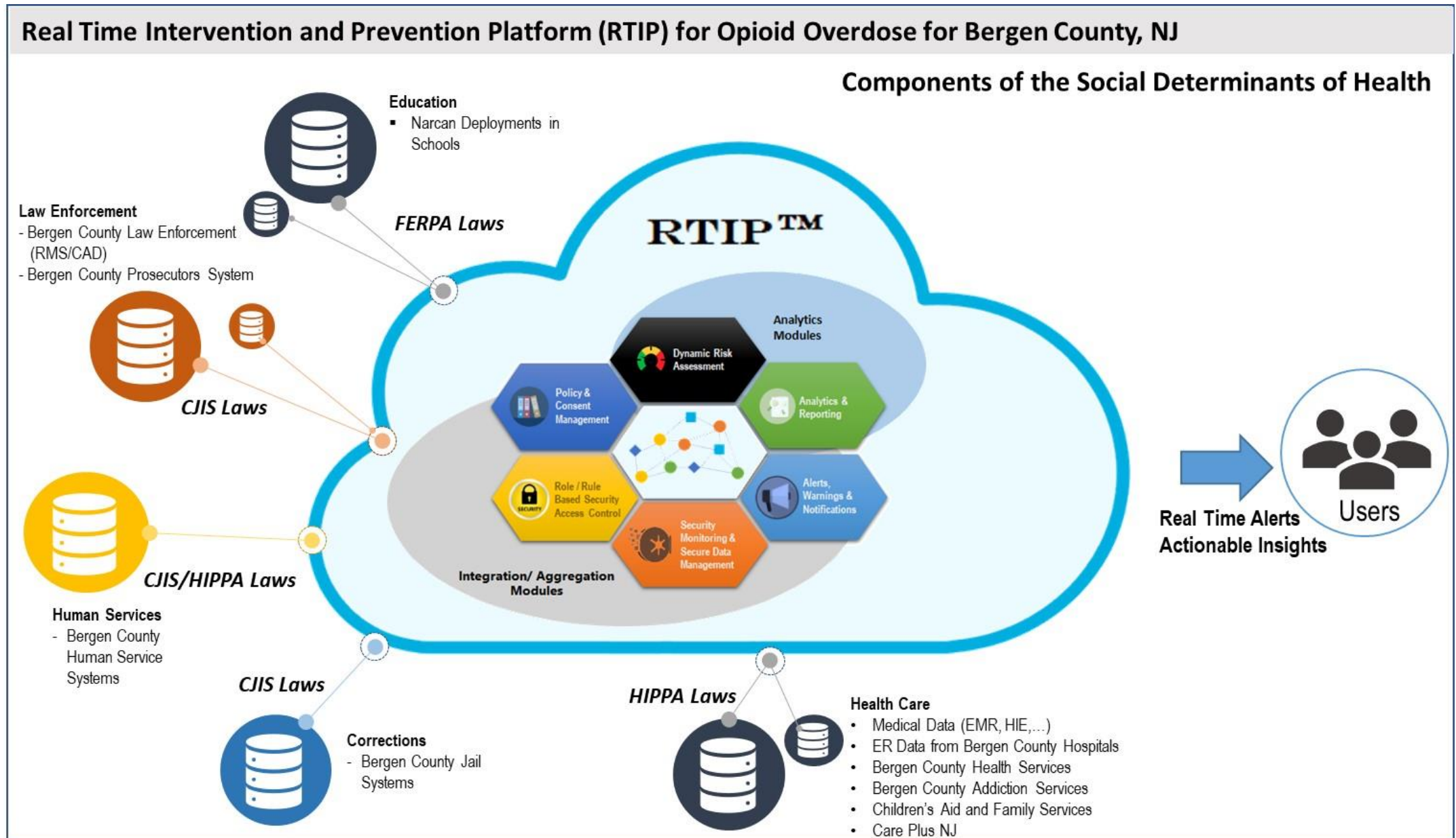
Bergen County – Opioid Overdose Elimination Project & RxCheck Project Overview

- ❖ In May 2018, the Bergen County Prosecutor's Office submitted a grant proposal to the Bureau of Justice Assistance for
"Implementation of innovative and replicable projects that combat precipitous increases in crime, with an emphasis on addressing violent crime, human trafficking, and the opioid crisis"
- ❖ In September 2018, the Bergen County Prosecutor's Office was awarded this grant to implement innovative solutions to combat the opioid crisis (deaths due to overdoses which were increasing nearly 100% every year)

Project Objectives

- ❖ Use technology to supplement the current “Operation Helping Hand” initiative to provide real time information to authorized personnel so that timely intervention can be provided to individuals that are identified as “high – risk” individuals to try to prevent additional overdoses
- ❖ Create a Dynamic Risk model that uses observed behavior and other determined risk factors to monitor individual risk
- ❖ Use this Dynamic Risk model to send alerts to authorized personnel so that timely interventions can be provided

Bergen County NJ, Technical Solution for Opioid Overdose Reduction



National RxCheck – Prescription Drug Monitoring Project

Background



- ❖ The RxCheck project was initiated by the US Department of Justice (DOJ) and supported by the Centers for Disease Control (CDC) to support the sharing of prescription data across state boundaries
- ❖ The focus of the effort is to enable health care providers to review the prescription patterns of patients before prescribing any opioids to the patients.

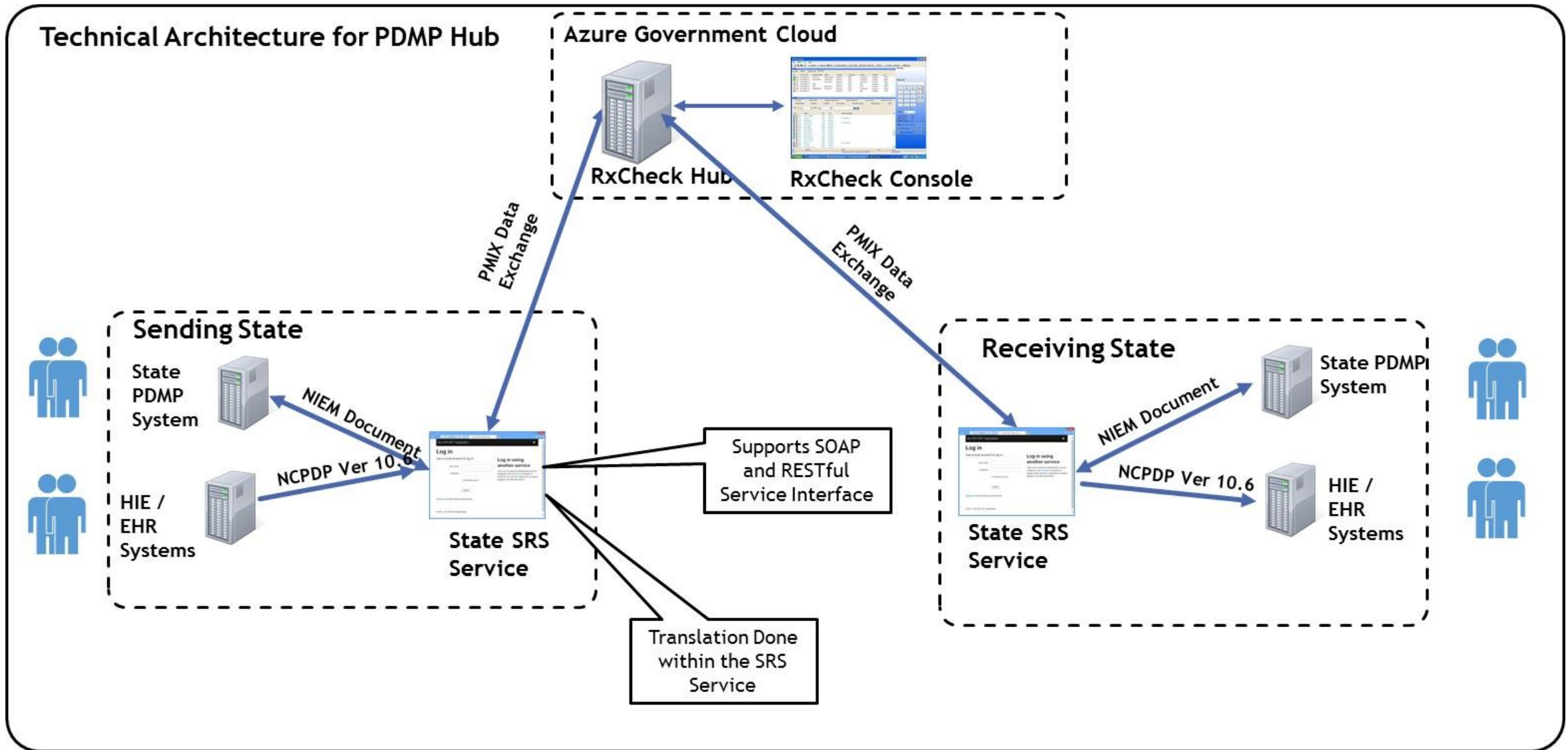
Background



Standards supported by the RxCheck Enterprise are:

- NCPDP Script v10.6
- NIEM
- PMIX
- FHIR 3.0

Technical Architecture for the Interstate Prescription Sharing





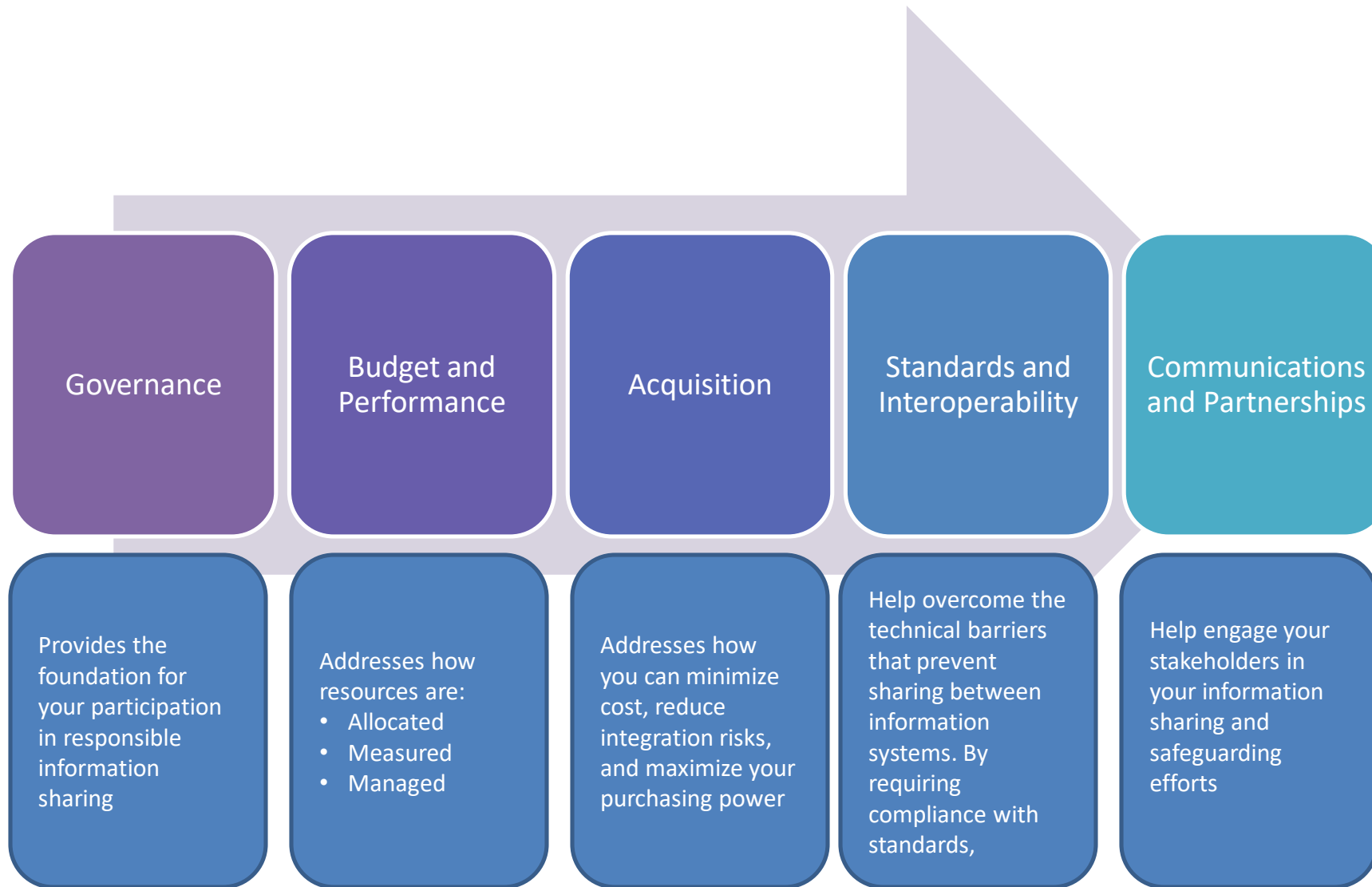
Information Sharing Building Blocks and Fairfax County Opioid Policy Project

Ashwini Jarral
Executive Director
IJIS Institute



IJIS Institute

Information Sharing Building Blocks



Fairfax County Opioid Policy Data Framework Project

Governance

- Executive Policy Board
- Planning and Management
- Practice Working Group
- Legal Working Group
- Data Management Working Group
- Technology Working Group
- Research Working Group

Budget and Performance

- Aligning Existing County Information Sharing Projects and Investments
- Federal Grants
- Office of Strategy Management for HHS lead agency
- Engagement of Dept. of Management and Budget
- Developing Key performance Indicators

Acquisition

- Leveraging Existing Project Investments
- Leveraging existing IT Investments and Resources
- Reusing existing County technology architecture

Standards and Interoperability

- Utilizing Existing Policy Framework Developed for Commonwealth of Virginia
- Leveraging MOUs used in other Information Sharing Programs across the nation
- Using National Data Standards (i.e. NIEM)

Communications and Partnerships

- Quarterly Stakeholder Meeting
- Monthly Project team and involved department meeting
- Regular interaction with the Legal and Policy team
- Project overview for the neighboring counties